

## Instructions for Use

### LymphoTrack<sup>®</sup> IGK Assay – S5/PGM<sup>™</sup>

Identify and track clonal B cell immunoglobulin kappa light chain (*IGK*) gene rearrangements using next-generation sequencing with the Thermo Fisher Scientific<sup>®</sup> Ion S5<sup>™</sup> or Ion PGM.

**RUO** This assay is for Research Use Only. Not for use in diagnostic procedures.

Schematic depiction of the *IGK* gene locus:



## Table of Contents

<b>1.</b>	<b>ASSAY USES</b> .....	<b>3</b>
<b>2.</b>	<b>SUMMARY AND EXPLANATION OF THE TEST</b> .....	<b>3</b>
2.1.	Background .....	3
2.2.	Summary .....	3
<b>3.</b>	<b>PRINCIPLES OF THE PROCEDURE</b> .....	<b>4</b>
3.1.	Polymerase Chain Reaction (PCR) .....	4
3.2.	Amplicon Purification .....	4
3.3.	Amplicon Quantification .....	4
3.4.	Next-Generation Sequencing (NGS) .....	4
3.5.	Multiplexing Amplicons.....	5
3.6.	Minimal Residual Disease (MRD) Testing .....	5
<b>4.</b>	<b>REAGENTS</b> .....	<b>6</b>
4.1.	Reagent Components.....	6
4.2.	Warnings and Precautions .....	7
4.3.	Storage and Handling.....	7
<b>5.</b>	<b>INSTRUMENTS</b> .....	<b>8</b>
<b>6.</b>	<b>SPECIMEN COLLECTION AND PREPARATION</b> .....	<b>9</b>
6.1.	Precautions .....	9
6.2.	Interfering Substances .....	9
6.3.	Specimen Requirements and Handling .....	9
6.4.	Sample Storage .....	9
<b>7.</b>	<b>ASSAY PROCEDURE</b> .....	<b>10</b>
7.1.	Materials Provided .....	10
7.2.	Materials Required (not provided).....	10
7.3.	Reagent Preparation .....	11
7.4.	Amplification .....	12
7.5.	AMPure XP Purification .....	12
7.6.	Quantification of Amplicons.....	13
7.7.	Pooling and Quantification of Library .....	15
7.8.	Dilution of the Pooled Library .....	15
7.9.	Template Preparation and Sequencing using the Ion Chef and Ion S5 .....	15
7.10.	Template Preparation and Sequencing using the Ion OT2 and Ion S5 .....	15
7.11.	Template Preparation and Sequencing using the Ion OT2 and Ion PGM .....	16
7.12.	Create a Planned Run.....	17
<b>8.</b>	<b>DATA ANALYSIS</b> .....	<b>18</b>
<b>9.</b>	<b>EXPECTED VALUES</b> .....	<b>19</b>
<b>10.</b>	<b>LIMITATIONS OF PROCEDURE</b> .....	<b>19</b>
<b>11.</b>	<b>SAMPLE DATA</b> .....	<b>20</b>
<b>12.</b>	<b>TROUBLESHOOTING GUIDE</b> .....	<b>20</b>
<b>13.</b>	<b>TECHNICAL AND CUSTOMER SERVICE</b> .....	<b>21</b>
<b>14.</b>	<b>REFERENCES</b> .....	<b>21</b>
<b>15.</b>	<b>SYMBOLS</b> .....	<b>21</b>
<b>16.</b>	<b>LEGAL NOTICE</b> .....	<b>21</b>
<b>17.</b>	<b>LYMPHOTrack <i>IGK</i> ASSAY – ION S5: SINGLE PAGE GUIDE</b> .....	<b>22</b>
<b>18.</b>	<b>LYMPHOTrack <i>IGK</i> ASSAY – PGM: SINGLE PAGE GUIDE</b> .....	<b>23</b>
<b>19.</b>	<b>APPENDIX A: CONFIGURE THE PLUGIN <i>FILEEXPORTER</i> AND LOAD CUSTOM BARCODES</b> .....	<b>24</b>

## 1. Assay Uses

This Research Use Only assay identifies clonal *IGK* V $\kappa$ -J $\kappa$ , V $\kappa$ -K<sub>de</sub>, and INTR-K<sub>de</sub> rearrangements, the DNA sequences of these rearrangements, and provides the distribution frequency of V $\kappa$  and J $\kappa$ , V $\kappa$ -K<sub>de</sub>, and INTR-K<sub>de</sub> segment utilization using the Thermo Fisher Scientific Ion PGM or S5 platform.

Analysis of the *IGK* locus increases the probability of identifying Ig gene rearrangements, as compared to testing for *IGH* gene rearrangements only. As a result, combining the analysis of *IGK* and *IGH* loci, increases the sensitivity of clonality detection.

## 2. Summary and Explanation of the Test

### 2.1. Background

The immunoglobulin kappa light chain (*IGK*) gene locus on chromosome 2 (2p11.2) includes many distinct V $\kappa$  gene segments, grouped into seven V $\kappa$  gene families as well as five J $\kappa$  gene segments upstream of the C $\kappa$  region. The kappa deleting element (K<sub>de</sub>), approximately 24 kb downstream of the J $\kappa$ -C $\kappa$  region can rearrange with V $\kappa$  gene segments (V $\kappa$ -K<sub>de</sub>) but also with an isolated RSS in the J $\kappa$ -C $\kappa$  intron (INTR). The resulting V $\kappa$ -K<sub>de</sub> and INTR-K<sub>de</sub> rearrangements are a product of unsuccessful rearrangements retained by the B cell.<sup>1</sup>

Lymphoid cells are different from other somatic cells in the body; during development, the antigen receptor genes in lymphoid cells undergo somatic gene rearrangement.<sup>2</sup> For example, during B-cell development, genes encoding the *IGK* locus are assembled from multiple polymorphic gene segments that undergo rearrangements and selection, generating combinations that are unique in both length and sequence. Since leukemias and lymphomas originate from the malignant transformation of individual lymphoid cells, an individual's leukemic or lymphoma cells generally share one or more cell-specific or "clonal" antigen receptor gene rearrangements. Therefore, tests that detect *IGK* clonal rearrangements can be useful in the study of B- and T-cell malignancies.

Initially, clonal rearrangements were identified using Restriction Fragment, Southern Blot Hybridization (RF-SBH) techniques. However, these tests proved cumbersome, labor-intensive, required large amounts of DNA and were not suitable for analysis of many of the less diverse antigen receptor loci.

During the last several decades, the use of RF-SBH assays has been supplanted by PCR-based clonality tests developed by Alexander Morley,<sup>3</sup> and are considered the current gold standard method. These assays identify clonality on the basis of over-representation of amplified V-D-J (or incomplete D-J products) following their separation using gel or capillary electrophoresis. Though sensitive and suitable for testing small amounts of DNA, these assays cannot readily differentiate between clonal populations and multiple rearrangements that might lie beneath a single-sized peak and are not designed to identify the specific V-J DNA sequence that is required to track clonal populations in subsequent analyses. This second limitation can be of particular importance, as once the unique clone-specific DNA sequence is identified, it can be used in subsequent tests to track and follow these clonal cell populations.

### 2.2. Summary

The LymphoTrack *IGK* Assay - S5/PGM represents a significant improvement over existing clonality assays using fragment analysis as it efficiently detects the majority of *IGK* gene rearrangements using a single multiplex master mix and, at the same time, identifies the DNA sequence specific for each clonal gene rearrangement. Therefore, this assay has two important and complementary uses: it aids both in the existence of clonality and identifies sequence information required to track those clones in subsequent samples.

The single multiplex master mix for *IGK* targets the V $\kappa$ -J $\kappa$ , the V $\kappa$ -K<sub>de</sub>, and the INTR-K<sub>de</sub> gene rearrangements described in lymphoid malignancies. Primers included in the master mixes are designed with Thermo Fisher Scientific adapters and 12 different indices. This assay allows for a one-step PCR and pooling of amplicons from several different samples and targets (generated with other LymphoTrack Assays for the Ion S5 or Ion PGM, sold separately) onto one Ion S5 or Ion PGM chip, allowing up to 12 samples per target to be analyzed in parallel in a single sequencing run.

The associated LymphoTrack Software – S5/PGM provides a simple and streamlined method of analysis and visualization of data.

Positive and negative controls for clonality are included in the kit.

**Note:** For a more thorough explanation of the locus and the targeted sequencing strategy, please refer to (Miller JE., 2013).<sup>4</sup>

### 3. Principles of the Procedure

#### 3.1. Polymerase Chain Reaction (PCR)

PCR assays are routinely used for the identification of clonal B- and T-cell populations. These assays amplify the DNA between primers that target the conserved framework of the V and J regions of antigen receptor genes. The primers lie on either side of an area where programmed genetic rearrangements occur during the maturation of all B and T lymphocytes. Different populations of B and T lymphocytes arise as a result of these genetic rearrangements.

The antigen receptor genes that undergo rearrangements are the immunoglobulin heavy chain (*IGH*) and light chain loci (*IGK* and *IGL*) in B-cells, and the T-cell receptor gene loci (*TRA*, *TRB*, *TRG*, and *TRD*) in T-cells. Each B- and T-cell has one or two productive V-J rearrangements that are unique in both length and sequence. Therefore, when DNA from a normal or polyclonal population is amplified using DNA primers that flank the V–J region, amplicons unique in both sequence and length are generated, reflecting the heterogeneous population. In some cases, where lymphocyte DNA is absent, no amplicons will be generated. Samples containing *IGK* clonal populations, yield up to four prominent amplified products of the same length and sequence which are detected with significant frequency within a diminished polyclonal background.

#### 3.2. Amplicon Purification

PCR amplicons are purified to remove excess primers, nucleotides, salts, and enzymes using solid-phase reversible immobilization (SPRI) paramagnetic bead technology for high-throughput purification of PCR amplicons. Using an optimized buffer, PCR products 100 bp or larger are selectively bound to paramagnetic beads while contaminants such as excess primers, primer dimers, salts, and unincorporated dNTPs are washed away. Amplicons can then be eluted and separated from the paramagnetic beads resulting in a purified PCR product for downstream analysis and amplicon quantification.

#### 3.3. Amplicon Quantification

Purified amplicons are quantified utilizing capillary electrophoresis, which applies the principles of traditional gel electrophoresis to separate and quantify DNA on a chip-based platform. Quantification is achieved by running a marker of known concentration alongside the amplicons and then extrapolating the concentration of the amplicons. Calculating the concentration of PCR amplicons allows equal amplicon representation in the final pooled library that is loaded onto the Ion S5 cartridge or Ion PGM chip for sequencing.

#### 3.4. Next-Generation Sequencing (NGS)

Sanger sequencing methods represent the most popular in a range of ‘first-generation’ nucleic acid sequencing technologies. Newer methods, which leverage tremendously parallel sequencing approaches, are often referred to as NGS. These technologies can use various combination strategies of template preparation, sequencing, imaging, and bioinformatics for genome alignment and assembly.

NGS technologies used in this assay rely on the amplification of genetic sequences using a series of consensus forward and reverse primers that include adapter and index tags. Amplicons generated with LymphoTrack Master Mixes are quantified, pooled, and loaded onto a chip for sequencing with the Thermo Fisher Scientific Ion S5 or Ion PGM platform. These platforms require the pooled library of DNA fragments to be bound to individual beads prior to sequencing, one unique sequence per bead. Once bound to the beads the DNA fragments are amplified via emulsion PCR until they cover the surface of the bead. The beads are then loaded onto a semi-conductor chip, where each bead occupies an individual well and sequencing occurs.

Sequencing is conducted by flooding the chip with individual unincorporated nucleotides one base at a time (dATP, dCTP, dGTP, dTTP), and the sequencing instruments detect the addition of nucleotides when hydrogen ions are released during DNA polymerization causing a change in pH of the wells, measured as a change in voltage. The voltage changes proportionally to the number of nucleotides added. After nucleotides are incorporated, unincorporated nucleotides are washed away, and the process begins again with a new dNTP.

### 3.5. Multiplexing Amplicons

These products were designed to allow for two different levels of multiplexing in order to reduce costs and time for laboratories. The first level of multiplexing originates from the multiple indices that are provided with the assays, up to 12. Each of these 12 indices can be considered to act as a unique barcode that allows amplicons from individual samples to be pooled together after PCR amplification to generate the sequencing library. The resulting sequences are sorted by the bioinformatics software to identify those that originated from an individual sample.

The second level of multiplexing originates from the ability of the accompanying software to sort sequencing data by both index and target. This allows amplicons generated with targeted primers (even those tagged with the same index) to be pooled together into a single library and sequenced on a single sequencing chip. An example would be to sequence products from several Invivoscribe LymphoTrack Assays together in the same run. However, it is important to obtain a sufficient number of reads, or depth of coverage, for valid interpretation of each sample. Due to the capacity of the Thermo Fisher Scientific Ion PGM Ion 316™ Chip v2 BC, which generates 2-3 million reads, it is recommended to multiplex no more than three different gene targets together, such as *IGH* FR1, *IGH* FR2 and *IGH* FR3. Up to five different gene targets can be multiplexed together on the Ion PGM Ion 318™ Chip v2 BC (4-5.5 million reads), Ion S5 Ion 520™ Chip (3-6 million reads) and Ion S5 Ion 530™ Chip (15-20 million reads).

**It is important to use the appropriate sequencing chemistry when multiplexing amplicons of different gene targets. The number of sequencing cycles must be sufficient to sequence the largest amplicon in the multiplex.** Two or more sequencing libraries generated from the same LymphoTrack gene target master mixes (*e.g.*, two *IGK* sequencing libraries, either from the same or different kit lots) can also be multiplexed together into a single sequencing library as long as each index for that master mix is only included once per sequencing run.

### 3.6. Minimal Residual Disease (MRD) Testing

The correlation of MRD status with overall survival rate was initially demonstrated for subjects with chronic lymphocytic leukemia using multi-parameter flow analysis (Montserrat, E). However, flow-based methods have proven difficult to standardize outside individual centers. Therefore, flow cytometry is not a suitable technology for international standardization, as it is difficult to compare results from different centers. Fortunately, a number of investigators have described NGS-based approaches that have demonstrated success in detecting and monitoring MRD in Chronic Lymphocytic Leukemia (CLL), Acute Lymphoblastic Leukemia (ALL) and other lymphoid malignancies.<sup>5,6</sup>

The LymphoTrack Assays are NGS-based deep sequencing assays that detect virtually all clonal rearrangements within targeted T-cell receptor (TCR) or immunoglobulin (Ig) antigen receptor loci. This performance suggests that a tumor-specific biomarker target can be readily identified in all subjects. Once a specific rearrangement (the clonotype) has been identified, LymphoTrack assays can be used to track these clonotype populations to a sensitivity as low as  $10^{-6}$ .

Please refer to the [MRD Software IFU](#) and the [MRD Technical Bulletin](#) for further details on how to use the Project Planner tool to successfully design an MRD experiment that meets or exceeds the required level of sensitivity and confidence.

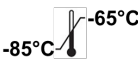
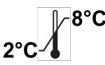
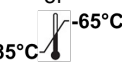
## 4. Reagents

### 4.1. Reagent Components

**Table 1.** Available Kits

Cat #	Description	# of Indexed Master Mixes	Total Reactions
71220007	LymphoTrack <i>IGK</i> Assay – S5/PGM	12 indices - 5 sequencing runs each	60

**Table 2.** LymphoTrack *IGK* Assay Kit Components

Reagents	Reagent Components	Index Number	Unit Quantity	71220007 # of Units	Storage Temperature	Notes
Master Mixes <sup>‡</sup>	<i>IGK</i> S5/PGM 01	IonXpress_001	250 µL	1		N/A
	<i>IGK</i> S5/PGM 02	IonXpress_002		1		
	<i>IGK</i> S5/PGM 04	IonXpress_004		1		
	<i>IGK</i> S5/PGM 08	IonXpress_008		1		
	<i>IGK</i> S5/PGM 09	IonXpress_009		1		
	<i>IGK</i> S5/PGM 10	IonXpress_010		1		
	<i>IGK</i> S5/PGM 11	IonXpress_011		1		
	<i>IGK</i> S5/PGM 12	IonXpress_012		1		
	<i>IGK</i> S5/PGM 13	IonXpress_013		1		
	<i>IGK</i> S5/PGM 14	IonXpress_014		1		
	<i>IGK</i> S5/PGM 16	IonXpress_016		1		
	<i>IGK</i> S5/PGM 17	IonXpress_017		1		
Positive Control DNA	<i>IGK</i> POS (+) (REF 40880018)	N/A	45 µL	2	 or 	<i>IGK</i> V3D-20_01 / <i>IGK</i> DEL DNA diluted in tonsil DNA
Negative Control DNA	NGS NEG (-) (REF 40920018)	N/A	45 µL	2		Tonsil DNA, highest sequence frequency can vary between lots

**Note:** There are no preservatives used in the manufacturing of these kits.

**‡Note:** IonXpress Indices 3, 5, 6, and 15 are not used in this kit.

## 4.2. Warnings and Precautions



Please read the Instructions for Use carefully prior to starting the assay procedure and follow each step closely.

- Use this assay kit as a system; do not substitute other manufacturers' reagents. Dilution, reducing amplification reactions, or other deviations from this protocol may affect the performance of this test and/or nullify any limited sublicense that come with the purchase of these kits.
- Do not mix or combine reagents from kits with different lot numbers.
- Materials are stable until the labeled expiration date when stored and handled as directed. Do not use kits beyond their expiration date.
- Adherence to the protocol will assure optimal performance and reproducibility. Ensure correct thermal cycler programs are used, as other programs may provide inaccurate/faulty data such as false-positive and false-negative results.
- Dispose of unused reagents and waste in accordance with country, federal, state and local regulations.
- Perform all laboratory procedures with standard personal protective equipment (gloves, laboratory coats and protective eye wear). Follow good laboratory practices and universal precautions when working with specimens. Do not pipette by mouth. Do not eat, drink or smoke in laboratory work areas. Wash hands thoroughly after handling specimens and assay reagents. Handle specimens in approved biological safety containment facilities and open only in certified biological safety cabinets. Use molecular biology grade water for the preparation of specimen DNA.
- Due to the high analytical sensitivity of these tests, use extreme care to avoid any contamination of reagents or amplification mixtures with samples, controls, or amplified materials. Use fresh, aerosol-resistant pipette tips between samples and between dispensing reagents.
- Closely monitor all reagents for signs of contamination (e.g., negative controls giving positive signals). Discard any reagents suspected of contamination.
- To minimize contamination, wear clean gloves when handling samples and reagents and routinely clean work areas and pipettes prior to setting up PCR.
- Follow uni-directional work flow between separate work areas in the PCR laboratory: begin with master mix preparation, move to specimen preparation, then to amplification, and finally to detection. Autoclaving does not eliminate DNA contamination. Perform pre- and post-PCR steps in separate spaces. Avoid taking paper and other materials from post-PCR into the pre-PCR space.
- Dedicate all pipettes, pipette tips, and any equipment used in a particular area to that area of the laboratory.
- Decontaminate non-disposable items with 10% bleach and rinse with distilled water two separate times before returning them to the starting areas.
- Use sterile, disposable plastic ware whenever possible to avoid contamination.

## 4.3. Storage and Handling

- Store the assay at **-85°C to -65°C** until ready to use.
- The optimum storage temperature for DNA controls is 2°C to 8°C, but DNA can also be stored at -85°C to -65°C.
- All reagents and controls must be thawed and vortexed or mixed thoroughly prior to use to ensure that they are completely resuspended.
- Due to high salt concentrations, PCR master mixes are sensitive to freeze/thaw cycles. Limit the number of cycles to a maximum of five times.

If you have any questions, please contact the Invivoscribe technical staff. We would be happy to help you determine your optimal storage needs.

## 5. Instruments

The instruments listed in Table 3 are recommended to use with the following validated platform combinations for the LymphoTrack *IGK* Assay – S5/PGM library preparation and sequencing:

- Ion Chef™ and Ion S5
- Ion OneTouch 2™ (OT2) and Ion S5
- Ion OT2 and Ion PGM

**Table 3.** Recommended Instruments.

Instrument Function	Validated Platform Combination with Recommended Instrument / Specifications		
	Ion Chef and Ion S5	Ion OT2 and Ion S5	Ion OT2 and Ion PGM
Amplification of DNA samples	<p><b>Veriti™ Thermal Cycler* or equivalent</b>            Minimum Thermal Range: 15°C to 96°C            Minimum Ramping Speed: 0.8°C / sec</p> <p>See section 7.4 <i>Amplification</i> for thermal cycler program.</p>		
Purification of PCR products	<p><b>Ambion® Magnetic Stand 96* (REF AM10027),            Agencourt SPRIPlate® 96 Ring Super Magnet Plate* (REF A32782),            Thermo Fisher Scientific DynaMag™-96 Side Skirted Magnet* (REF 12027) or equivalent</b></p> <p>See section 7.5. <i>AMPure XP Purification</i> for PCR product purification methods.</p>		
Quantification of purified PCR products	<p><b>Agilent 2100 Bioanalyzer* or Perkin Elmer LabChip GX*</b></p> <p>See section 7.6. <i>Quantification of Amplicons</i> for further details.</p>		
Template Preparation	<p><b>Thermo Fisher Scientific Ion Chef System*</b></p> <p>See section 7.9. <i>Template Preparation and Sequencing using the Ion Chef and Ion S5</i> for further details</p>	<p><b>Thermo Fisher Scientific Ion OT2 System*</b></p> <p>See section 7.10. <i>Template Preparation and Sequencing using the Ion OT2 and Ion S5</i> for further details.</p>	<p><b>Thermo Fisher Scientific Ion OT2 System*</b></p> <p>See section 7.11. <i>Template Preparation and Sequencing using the Ion OT2 and Ion PGM</i> for further details.</p>
Sequencing	<p><b>Thermo Fisher Scientific Ion S5 Instrument*</b></p> <p>See sections 7.9. <i>Template Preparation and Sequencing using the Ion Chef and Ion S5</i> and 7.10. <i>Template Preparation and Sequencing using the Ion OT2 and Ion S5</i> for further details.</p>		<p><b>Thermo Fisher Scientific Ion PGM Instrument*</b></p> <p>See section 7.11. <i>Template Preparation and Sequencing using the Ion OT2 and Ion PGM</i> for further details.</p>

\*Follow manufacturer's installation, operation, calibration and maintenance procedures.



## 6. Specimen Collection and Preparation

### 6.1. Precautions

Biological specimens from humans may contain potentially infectious materials. Handle all specimens in accordance with your institute's Bloodborne Pathogen program and/or Biosafety Level 2.

### 6.2. Interfering Substances

The following substances are known to interfere with PCR:

- Divalent cation chelators
- Low retention pipette tips
- EDTA (not significant at low concentrations)
- Heparin

### 6.3. Specimen Requirements and Handling

- The minimum input quantity is 50 ng of high-quality DNA (5  $\mu$ L of sample DNA at a minimum concentration of 10 ng/ $\mu$ L).
- This assay tests extracted and purified genomic DNA. DNA must be quantified with a method specific for double-stranded DNA (dsDNA) and free of inhibitors of PCR amplification.
- Resuspend DNA in an appropriate solution such as 0.1X TE (1 mM Tris-HCl, 0.1 mM EDTA, pH 8.0, prepared with molecular biology grade water) or molecular biology grade water alone.

### 6.4. Sample Storage

Store samples using a method that prevents degradation of DNA.

## 7. Assay Procedure

### 7.1. Materials Provided

See Table 2 for materials provided in each kit.

### 7.2. Materials Required (not provided)

**Table 4.** Materials Required (not provided)

Reagent/Material	Required and/or Recommended Reagents/Suppliers	Catalog #	Notes
<b>DNA Polymerase</b>	Roche®: <ul style="list-style-type: none"> <li>EagleTaq™ DNA Polymerase or</li> </ul> Invivoscribe : <ul style="list-style-type: none"> <li>FalconTaq DNA Polymerase or equivalent</li> </ul>	05206944190 or 60970130	5 U/μL
<b>Molecular Biology Grade Water</b>	N/A	N/A	DNase / RNase free
<b>Calibrated Pipettes</b>	N/A	N/A	Must be able to accurately measure volumes between 0.2 μL and 1000 μL
<b>Vortex Mixer</b>	N/A	N/A	N/A
<b>PCR Plates or Tubes</b>	N/A	N/A	N/A
<b>Filter Barrier Pipette Tips</b>	N/A	N/A	Sterile, RNase/DNase/Pyrogen-free
<b>Microcentrifuge Tubes</b>	N/A	N/A	Sterile
<b>PCR Purification Kit</b>	Beckman Coulter®, Inc: <ul style="list-style-type: none"> <li>Agencourt AMPure XP</li> </ul>	A63880	N/A
<b>Amplicon &amp; Library Quantification</b>	Agilent® Technologies: <ul style="list-style-type: none"> <li>Agilent DNA 1000 Kit or</li> </ul> Perkin Elmer: <ul style="list-style-type: none"> <li>HT DNA 1K/12K/Hi Sens Labchip &amp; HT DNA HiSens Reagents</li> </ul>	5067-1504 or 760517 & CLS760672	N/A
<b>Ion PGM Sequencing</b>	Thermo Fisher Scientific: <ul style="list-style-type: none"> <li>Ion PGM Hi-Q View OT2 Kit</li> </ul>	A29900	N/A
	Thermo Fisher Scientific: <ul style="list-style-type: none"> <li>Ion PGM Enrichment Beads</li> </ul>	4478525	N/A
	Thermo Fisher Scientific: <ul style="list-style-type: none"> <li>Ion PGM Hi-Q View Sequencing Kit</li> <li>Ion PGM Wash 2 Bottle Kit</li> </ul>	A30044 A25591	N/A
	Thermo Fisher Scientific: <ul style="list-style-type: none"> <li>Ion 316 Chip v2 BC or Ion 318 Chip v2 BC</li> </ul>	4488149 or 4488146	N/A
<b>Ion S5 Sequencing</b>	Thermo Fisher Scientific: <ul style="list-style-type: none"> <li>Ion 520 &amp; Ion 530 Kit – OT2 or Ion 510 &amp; Ion 520 &amp; Ion 530 Kit – Chef</li> </ul>	A27751 or A34019	N/A
<b>Ion S5 Sequencing</b>	Thermo Fisher Scientific: <ul style="list-style-type: none"> <li>Ion 520 Chip Kit or Ion 530 Chip Kit</li> </ul>	A27761 or A27764	N/A

**Table 4.** Materials Required (not provided)

Reagent/Material	Required and/or Recommended Reagents/Suppliers	Catalog #	Notes
The Torrent Suite™ Software for Ion PGM System or Ion S5 System	Version 5.0.4 or 5.2.2 for PGM* or Version 5.6 for S5*	N/A	N/A

**\*Note:** These software versions were used for assay verification on the specified instruments.

### 7.3. Reagent Preparation

To ensure DNA samples contain no PCR inhibitors and are of sufficient quality and quantity to generate a valid result samples may be tested with the Specimen Control Size Ladder Master Mix from Invivoscribe ([REF](#) 20960021 for ABI detection or [REF](#) 20960020 for gel detection). The Specimen Control Size Ladder targets multiple genes and generates a series of amplicons of 100, 200, 300, 400 and 600 bp; product sizes may vary  $\pm 5$  bp due to size standard and instrument variability. This is especially important for DNA from challenging specimens *e.g.*, FFPE tissue.

**Always use positive and negative controls** to ensure the assay has been performed correctly.

**Always include a no template control (NTC)** to check for contamination during the PCR set-up.

- 7.3.1. Using gloved hands, remove the Master Mixes from the freezer. Allow the tubes to thaw; then gently vortex to mix followed by a very brief centrifugation.
- 7.3.2. In a containment hood or dead air box pipette 45  $\mu$ L from each Master Mix tube into a clean PCR plate (one well for each Master Mix and one Master Mix per sample).
  - Include two controls in each run (one positive and one negative) as well as one NTC.
  - For the NTC, use molecular biology grade water as template instead of DNA.
- 7.3.3. Add 0.2  $\mu$ L of Taq DNA Polymerase (@5 U/ $\mu$ L) to each well containing aliquoted Master Mixes.
- 7.3.4. Add 5  $\mu$ L of sample DNA (at a minimum concentration of 10 ng/ $\mu$ L), control DNA, or molecular biology grade water (NTC) to the individual wells containing the respective Master Mix reactions.
  - Pipette up and down 5-10 times to mix.
  - Seal the plate, briefly centrifuge and place in the PCR thermal cycler.

**Table 5.** Reaction Setup

Reagent	Volume
Master Mix	45.0 $\mu$ L
Taq DNA polymerase	0.2 $\mu$ L
Sample or Control DNA	5.0 $\mu$ L
<b>Total</b>	<b>50.2 <math>\mu</math>L</b>

## 7.4. Amplification

- 7.4.1. Amplify the samples using the PCR program from Table 6.

**Table 6.** PCR Program

Step	Temperature	Time	Cycle
1	95°C	7 minutes	1
2	95°C	45 seconds	29x
3	60°C	45 seconds	
4	72°C	90 seconds	
5	72°C	10 minutes	1
6	15°C	∞	1

- 7.4.2. Once the amplification program has completed, remove the amplified PCR plate from the thermal cycler.
- If not immediately continuing to the next steps, store the PCR products at 4°C for 1 day.

## 7.5. AMPure XP Purification

Purification of the PCR products from samples, positive and negative controls and no template controls was performed during assay verification using the Agencourt AMPure XP PCR Purification system.

### Preparation:

- 7.5.1. Remove the AMPure XP reagent from storage and allow it to equilibrate to room temperature before use. Gently shake the Agencourt AMPure XP bottle to resuspend any magnetic particles that may have settled.
- 7.5.2. Transfer the appropriate volume of Agencourt AMPure XP reagent needed for the plate to a new 2 mL tube to minimize the risk of contamination by pipette tips.
- The required volume of Agencourt AMPure XP reagent =  $n \times 90 \mu\text{L}$  ( $n$  is number of samples to be purified).
- 7.5.3. Prepare a fresh of 70% ethanol using sterile water stock (0.5 mL for each sample to be purified).

### Binding of Amplicons to Magnetic Particles:

- 7.5.4. Add 90  $\mu\text{L}$  of the aliquoted, **room temperature** Agencourt AMPure XP reagent to each sample to be purified.
- Mix by pipetting up and down 10 times.
  - The color of the mixture should appear homogenous after mixing.
  - Incubate 5 minutes at room temperature.
- 7.5.5. Place the mixed samples on an Ambion Magnetic Stand 96 and incubate at room temperature for 5 minutes to allow the magnetic particles to separate from the solution.
- Keep the plate on the magnetic stand at all times during this procedure, until step 7.5.10 below.
- 7.5.6. Using a P200 (or equivalent multichannel pipette) set to 135  $\mu\text{L}$ , aspirate the clear supernatant and discard.
- Use a P10 pipette (or equivalent multichannel pipette) set to 10  $\mu\text{L}$  to remove any excess supernatant.
  - Avoid removing any magnetic particles.

### Washing:

- 7.5.7. Keeping the plate on the magnetic stand, add 200  $\mu\text{L}$  of 70% ethanol to each sample. Incubate for 30 seconds at room temperature.
- Using a P200 (or equivalent multichannel pipette) set to 195  $\mu\text{L}$ ; aspirate the ethanol and discard.
  - Use a P10 pipette (or a multichannel pipette) set to 10  $\mu\text{L}$  to remove excess ethanol.
  - Avoid removing any magnetic particles.
- 7.5.8. Repeat step 7.5.7 for a total of two washes.
- 7.5.9. With the plate still on the magnetic stand, allow the magnetic particles to air-dry for 5 minutes.

**Elution:**

- 7.5.10. Remove the plate from the magnetic stand. Add 40  $\mu\text{L}$  of 1X TE buffer. Mix by pipetting until homogeneous.
- Make sure all magnetic particles are in solution.
- 7.5.11. Incubate at room temperature for 2 minutes.
- 7.5.12. Place the plate on the magnetic stand for at least 5 minutes or until the supernatant has cleared.
- 7.5.13. Transfer 35  $\mu\text{L}$  of the eluate to a fresh plate and seal with cap strips. Label the plate and briefly centrifuge to ensure the supernatant has completely settled to the bottom of the well.
- Store at  $-20^{\circ}\text{C}$  or proceed to the next step.

The gel image in Figure 1 illustrates the effectiveness of a typical purification.

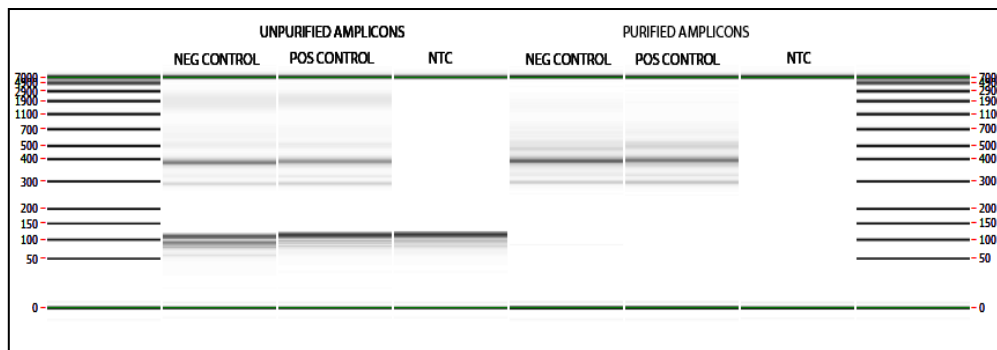


Figure 1: Example of a purification result amplicons from the *IGK* PGM Master Mixes. The image was generated by running unpurified and purified products on the LabChip GX

## 7.6. Quantification of Amplicons

The following steps were performed during assay verification to analyze data generated from samples using either the Agilent 2100 Bioanalyzer, starting with step 7.6.1 or the Perkin Elmer LabChip GX starting at step 7.6.3.

frameworks) due to the different size ranges of each assay target.

### Agilent 2100 Bioanalyzer Quantification

Prepare an Agilent DNA 1000 Chip for use (please refer to the Agilent DNA 1000 kit instructions for more details).

#### Result Interpretation:

- 7.6.1. The electropherogram of the ladder well is expected to resemble the electropherogram in Figure 2. Major features of a successful run are:
- 13 peaks for the DNA 1000 ladder
  - All peaks are well resolved
  - Flat baseline
  - Correct identification of both markers
- 7.6.2. Determine the molar concentration (nmol/L) of each sample using the Bioanalyzer software. If necessary, use manual integration to place the entire range of library fragments within a single peak.

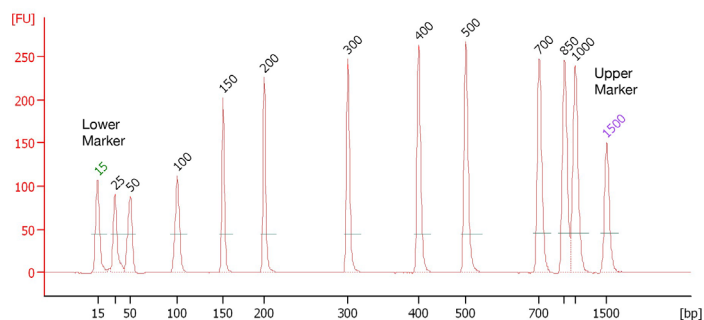


Figure 2: Example of an electropherogram of the ladder well showing all 13 peaks.

### Perkin Elmer LabChip GX Quantification

Prepare the LabChip GX Chip for use (please refer to the Perkin Elmer LabChip GX instructions for more details).

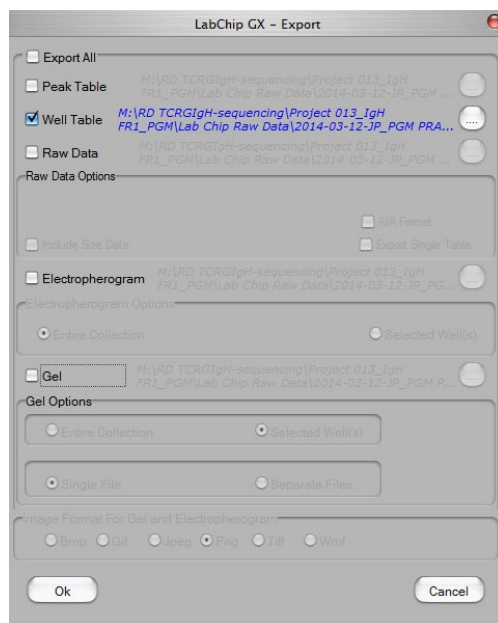
#### Data Analysis:

- 7.6.3. By default, each time an experiment is run, the data file (\*.gxd) is saved in a new folder (named with the current date) that can be accessed by the Data folder shortcut on the Desktop.
- 7.6.4. Transfer the folder containing the data file (\*.gxd) to the computer for analysis.
- 7.6.5. Open the LabChip GX software, go to the menu bar and select **File → Import Data** file to open the transferred data file (\*.gxd).
- 7.6.6. In the upper left hand corner of the screen is a plate diagram. Select the wells used in the experiment to display the associated data in the data tables below. The wells will appear blue when selected.
- 7.6.7. Go to the menu bar and select **Analysis → Analysis Settings**.
  - Select the **Smear Analysis** Tab and add the applicable information from Table 7.
  - Once all information has been edited, click on the **Apply** button.

**Table 7.** Settings for the Smear Analysis with *IGK*

Start Size (bp)	End Size (bp)	Color	Name	Property Displayed in Well Table	Apply to Wells
200	1600	Red	Region [200-1600]	Region [200-1600] Size [bp]	<all>
200	1600	Red	Region [200-1600]	Molarity (nmol/L)	<all>

- 7.6.8. Back at the main screen, go to the menu bar and select **File → Export**.
- 7.6.9. Check the *Well Table* in the pop up window (entitled LabChip GX – Export).



**Figure 3:** Example of LabChip GX – Export pop up window.

- 7.6.10. Click **OK** to export a CSV file.
- 7.6.11. Calculate undiluted amplicon concentration by multiplying the dilution factor (50) with the concentration given from the LabChip GX (nmol/L).

### 7.7. Pooling and Quantification of Library

The quantity of library DNA loaded into the Ion S5 or Ion PGM emulsion PCR is critical for generating high-quality data in a sequencing run.

Amplicons generated from one or multiple LymphoTrack Assays can be pooled together into one library for sequencing using the instructions listed below.

Based on the amplicon concentration calculated by the Bioanalyzer or LabChip GX, **add an equal amount of amplicons** (with the exception of the NTC sample).

- *e.g.*, combine 10 µL of amplicons at 4 nM each in a tube, using 1X TE buffer as a diluent.
- Vortex the library tube for 5-15 seconds and then centrifuge for 3-5 seconds.

If there are any samples with concentrations considerably lower or higher than 4 nM adjust the sample/TE buffer volumes added to the library, ensuring that equal amount of amplicons per sample are pipetted.

### 7.8. Dilution of the Pooled Library

Determine the template dilution factor that gives a final concentration of ~20 pM (~12 x 10<sup>6</sup> molecules per µL) using the following formula:

$$\text{Template Dilution Factor} = (\text{Library Concentration in pM}) / 20 \text{ pM}$$

**Example:**

The library concentration is 4 nM (4000 pM)

Template Dilution Factor = 4000 pM / 20 pM = 200

Thus, 1 µL of library mixed with 199 µL of 1X TE buffer or the Nuclease-free water provided in the Ion PGM Hi-Q View OT2 Kit (1:200 dilution) yields approximately 20 pM (~12 x 10<sup>6</sup> molecules per µL).

Use the diluted library within 48 hours of preparation.

### 7.9. Template Preparation and Sequencing using the Ion Chef and Ion S5

Prepare and enrich template-positive Ion Sphere Particles followed by sequencing on the Ion S5 adhering to the following Thermo Fisher Scientific User Guide:

- Ion 510 & Ion 520 & Ion 530 Kit – Chef ([REF](#) MAN0016854)

7.9.1. Create planned run following section 7.12.

All steps including installation, operation, calibration, cleaning and maintenance procedures are performed according to the manufacturer's instructions.

### 7.10. Template Preparation and Sequencing using the Ion OT2 and Ion S5

Prepare and enrich template-positive Ion Sphere Particles using the OT2 followed by sequencing with the Ion S5, adhering to the following Thermo Fisher Scientific User Guide:

- Ion 520 & Ion 530 Kit – OT2 ([REF](#) MAN0010844)

7.10.1. Create a planned run following section 7.12.

All steps including installation, operation, calibration, cleaning and maintenance procedures are performed according to the manufacturer's instructions.

### 7.11. Template Preparation and Sequencing using the Ion OT2 and Ion PGM

Prepare and enrich template-positive Ion Sphere Particles using the OT2 followed by sequencing with the Ion PGM, adhering to the following Thermo Fisher Scientific User Guides:

- Ion PGM Hi-Q View OT2 Kit ([REF](#) MAN0014579)
- Ion PGM Hi-Q View Sequencing Kit ([REF](#) MAN0014583)

All steps including installation, operation, calibration, cleaning and maintenance procedures are performed according to the manufacturer's instructions.

**Note:** Do not use the Ion PGM Calibration Standard.

#### 7.11.1. Prepare template using the Ion OT2

- Select **PGM: Ion PGM Hi-Q View OT2 Kit - 400** from the drop-down menu

#### 7.11.2. Sequence the library using the Ion PGM

- Follow section 7.11.3 for Chip Loading
- Create planned run following section 7.12.

#### 7.11.3. Ion PGM Chip Loading

Use the chip loading instructions below for optimal chip loading.

7.11.3.1. Following *Chip Check*, prepare the chip for loading following the manufacturer's instructions.

7.11.3.2. After dialing the pipette down to load the ISPs (~30  $\mu$ L) into the chip at a rate of ~1  $\mu$ L per second, transfer the chip in the bucket to the minifuge with the chip tab pointing in (toward the center of the minifuge).

- Use 30 second minifuge spins with the chip tab pointing in and then turned to point out.

7.11.3.3. Firmly tap the point of the chip tab on the bench top 2-3 times.

- To avoid the generation of bubbles, do not pipet the sample out and then back into the chip.

7.11.3.4. Tilt the chip at a 45° angle and slowly remove as much liquid as possible from the loading port by dialing up the pipette. Discard the liquid.

- If some liquid remains in the chip, perform a 5-second quick spin with the chip-tab pointing out and remove and discard any additional liquid. Do not spin the chip upside-down.
- If some liquid remains in the chip after the quick spin, lightly and rapidly tap the point of the chip tab against the benchtop a few times and remove and discard any collected liquid.
- Do not flush the chip.

7.11.3.5. Immediately proceed to selecting the *Planned Run* and *Performing the Run* (section 7.12).

**Note:** Validations were performed following the Thermo Fisher Scientific User Guides listed in section 14: *References* along with the weighted bucket chip loading procedure. After the sequencing primer annealing step, the reactions remained in the thermal cycler at 15°C instead of at room temperature.

If using Torrent Suite Software v5.2.2 or v5.6, follow the procedure in Appendix A to verify the configuration of the *FileExporter* plugin and load the custom barcodes using the *LymphoTrack\_IonXpress.csv* file included with the software package ([REF](#) 75000007).

Please see section 8: *Data Analysis LymphoTrack Software S5/PGM* instructions for use (IFU) for instructions to obtain the software package through the Invivoscribe Software Portal. If using TSS v5.0.4, please continue to step 7.12.



## 7.12. Create a Planned Run

- 7.12.1. Create a Planned Run for **Ion S5** or **Ion PGM**. Log into the Torrent Browser for the Torrent Server connected to the system.
- 7.12.2. Click the **Plan** tab and then click on **Generic Sequencing** under *Templates*, then select **Plan New Run** on the top right.
- 7.12.3. In the *Plan Run Wizard*, review each screen and make the appropriate selection following Table 8.
- 7.12.4. Select the *Planned Run* and perform the run.

**CAUTION!** If using TSS v5.2.2 or v5.6 please contact Thermo Fisher Tech Support for assistance with uploading barcodes.

### Characters in file name:

Give each sample a unique name or identifier when naming samples. If duplicate samples are run, a similar name can be used (*i.e.*, Sample1a and Sample1b).

Failure to provide unique names to samples that will be run together on the same chip will result in multiple sample results being combined by the LymphoTrack Software – PGM/S5 during the analysis process.

It is important that the filenames only contain the following characters (A-Z, a-z, 0-9, ., \_ [underscore], - [hyphen]).

If the software encounters a character not within this set or more than one consecutive space, it may fail.

### Sample name when multiplexing:

Each index can only be listed in the planned run once; therefore, any necessary tracking information for samples sequenced with multiple targets using the same index must be included within one Sample Name field (which is incorporated into the FASTQ file name).

Track all samples and targets in an Ion PGM or Ion S5 run that are sequenced using the same index. Give this set of samples/targets a unique identifier to include in the Sample Name field in the Planned Run.

Examples of Sample Names that can be used for tracking purposes are listed below:

- S1\_FR1\_FR2\_FR3\_IGK (one sample sequenced with multiple assays using the same index)
- S1\_FR1\_S4\_TRG (multiple samples sequenced with multiple assays using the same index)
- Pool02\_IX002 (Pool 02 refers to all samples/targets sequenced with IonXpress\_002 and tracked elsewhere)

### Indices when multiplexing:

Please note that the IonXpress Indices 5 and 6 are not used in the LymphoTrack *IGH* (FR1, FR2, FR3) and *TRG* Assay kits and Indices 3, 5, 6, 7 and 15 are not used in the LymphoTrack *IGK* Assay kits for the Ion PGM and Ion S5.

**Table 8.** Run Plan Wizard settings by platform combination

Setting	Validated Platform Combination		
	Ion Chef and Ion S5	OT2 and Ion S5	OT2 and Ion PGM
<b>Ion Reporter</b>	Ion Reporter - None Sample Grouping - Blank	Ion Reporter - None Sample Grouping - Blank	Ion Reporter - None Sample Grouping - Blank
<b>(Research) Application</b>	Application – DNA Target Technique – Other	Application – DNA Target Technique – Other	Application – DNA Target Technique – Other
<b>Kits</b>	Sample Preparation Kit – leave blank	Sample Preparation Kit – leave blank	Sample Preparation Kit – leave blank
	Library Kit Type – leave blank	Library Kit Type – leave blank	Library Kit Type – leave blank
	Template Kit: ▪ Select Instrument: Chef ▪ Ion 510 & Ion 520 & Ion 530 Kit – Chef	Template Kit: ▪ Select Instrument: OneTouch ▪ Ion 520 & Ion 530 Kit – OT2	Template Kit: ▪ Select Instrument: OneTouch ▪ Ion PGM Hi-Q View OT2 Kit– 400
	Sequencing Kit ▪ Ion 510 & Ion 520 & Ion 530 Kit – Chef	Sequencing Kit ▪ Ion 520 & Ion 530 Kit – OT2	Sequencing Kit ▪ Ion PGM Hi-Q View Sequencing Kit
	Templating Size – 400bp	Templating Size – 400bp	n/a

**Table 8.** Run Plan Wizard settings by platform combination

Setting	Validated Platform Combination		
	Ion Chef and Ion S5	OT2 and Ion S5	OT2 and Ion PGM
Kits	Flows – 850	Flows – 850	Flows – 850
	Control Sequence – leave blank	Control Sequence – leave blank	Control Sequence – leave blank
	Chip Type: <ul style="list-style-type: none"> <li>▪ Ion 520 Chip or</li> <li>▪ Ion 530 Chip</li> </ul>	Chip Type: <ul style="list-style-type: none"> <li>▪ Ion 520 Chip or</li> <li>▪ Ion 530 Chip</li> </ul>	Chip Type: <ul style="list-style-type: none"> <li>▪ Ion 316 Chip v2 BC or</li> <li>▪ Ion 318 Chip v2 BC</li> </ul>
	Barcode Set – IonXpress or LymphoTrack_IonXpress <sup>3</sup>	Barcode Set – IonXpress or LymphoTrack_IonXpress <sup>3</sup>	Barcode Set – IonXpress or LymphoTrack_IonXpress <sup>3</sup>
Plug-ins	Select FileExporter <sup>1,2</sup>	Select FileExporter <sup>1,2</sup>	Select FileExporter <sup>1,2</sup>
Projects	Select the appropriate Project folder for saving the run or add a new project	Select the appropriate Project folder for saving the run or add a new project	Select the appropriate Project folder for saving the run or add a new project
Template Name	Enter a Template Name and add any notes	Enter a Template Name and add any notes	Enter a Template Name and add any notes
Reference	Leave all sections blank	Leave all sections blank	Leave all sections blank
Monitoring	Bead Loading (%) ≤ 30 Key Signal (1-100) ≤ 30 Usable Sequence (%) ≤ 30	Bead Loading (%) ≤ 30 Key Signal (1-100) ≤ 30 Usable Sequence (%) ≤ 30	Bead Loading (%) ≤ 30 Key Signal (1-100) ≤ 30 Usable Sequence (%) ≤ 30

<sup>1</sup>Note: The Torrent Suite™ Software version 5.0.4 PlugIn “FileExporter” may not generate FASTQ Files. Contact Thermo Fisher Tech Support for further assistance if a “DOCSTRING ERROR” message is received.

<sup>2</sup>Note: Avoid long file names as they may interfere with the PlugIn “FileExporter”.

<sup>3</sup>Note: If using TSS v5.2 or v5.6, please refer to the *LymphoTrack\_IonXpress.csv* file included with the software package (REF 75000007)

## 8. Data Analysis

The LymphoTrack *IGK* Assay – S5/PGM was designed to produce sequencing data that can be analyzed using the LymphoTrack Software – S5/PGM package included with the software package (REF 75000007), available for download through the Invivoscribe Software Portal. Samples prepared with the LymphoTrack *IGK* Assay – S5/PGM generate FASTQ files that can be easily processed with the LymphoTrack Data analysis application.

### 8.1. Download the *LymphoTrack Software – S5/PGM* from Invivoscribe Software Portal

8.1.1. Using any web browser, navigate to <https://catalog.invivoscribe.com/softwareportal/>

8.1.2. Complete the following text fields:

8.1.2.1. Email: Enter a valid email address. A link to the software download will be sent to this address.

8.1.2.2. Customer Account Number: Enter the unique ID used when placing orders with Invivoscribe.

8.1.2.3. Software Code: Enter the software code found on your sales order.

8.1.3. Check the *Terms and Conditions* box to proceed.

8.1.4. Click the **Request Software** icon.

- Following valid input text into the above fields, a link to the software download will be sent to the provided email address.

8.1.5. Click the link or *copy+paste* into a web browser; the software will automatically download.

## 8.2. Install the *LymphoTrack Software – S5/PGM*

Upon completion of the software package download, the **7500007\_N.zip** file must be extracted and installed.

- 8.2.1. Double-click the **LymphoTrack-S5-PGM\_2.4.10.RUO.msi** file.
- 8.2.2. If a message appears, stating *Windows protected your PC*, click **More info** and verify the publisher is Invivoscribe, Inc., then click **Run anyway**.
  - The software installer will open and allow the software to be installed to a local drive on the computer.
  - The default install location is C:\Invivoscribe\LymphoTrack-S5-PGM-2.4.10.RUO.
- 8.2.3. Follow the Windows Setup Wizard installation prompts, select the directory file path to save the software and click **Install**.
  - Install software only on a local drive (not a network drive); the software might not function properly if run across a network connection.
    - 8.2.3.1. If the *User Account Control dialog* appears, click **Yes**.
- 8.2.4. Once installation is complete, click **Finish**.
  - The software is now ready to use and can be accessed by navigating to the *Start Menu* or the directory file path selected in step 8.2.2.

## 8.3. Continue with Analysis

Please reference the LymphoTrack Software – S5/PGM instructions for use (**REF** 280359) for the analysis procedure.

## 9. Expected Values

The calculations generated by the software are rounded to the nearest tenth to determine assay results.

- S5 and PGM Run Validity
  - Loading > 50%
  - Enrichment > 50%
  - Clonal > 50%
- *IGK* Positive Control: top % reads  $\geq$  5.0%
- NGS Negative Control: top % reads < 3.0%

## 10. Limitations of Procedure

- This assay does not identify 100% of clonal cell populations.
- PCR-based assays are subject to interference by degradation of DNA or inhibition of PCR amplification due to heparin or other agents that might be present in the analyzed sample.
- A higher level of variance at or near the analytical limit of detection (LOD) is inherent to most technologies; including, but not limited to next generation sequencing. Follow-up testing is suggested when a result presents near the assay analytical LOD.

## 11. Sample Data

For Research Use Only. Not for use in Diagnostic Procedures.

### LymphoTrack Report for assay IGK

Sample name: index001\_001

Total Read Count: 187803

Caution: Do not edit fields and save.

#### Top 10 Merged Read Summary

Rank	Sequence	Length	Merge count	V-gene	J-gene	% total reads	Cumulative %	V-coverage	CDR3 seq
1	AGCAGGGCCACTGGCA	222	13683	IGKV3D-20_01	IGKDEL	7.29	7.29	96.95	not found
2	AGCAGGGCCACTGGCA	149	3226	IGKV3D-20_01	IGKJ1_01	1.72	9.00	99.24	CAGCAGTATGGTAGCTC
3	AACAGGGCCACTGGCA	149	3060	IGKV3-11_01	IGKJ4_01	1.63	10.63	97.71	CAGCAGCGTAGCAAC
4	AGCAGGGCCACTGGCA	147	2520	IGKV3D-20_01	IGKJ4_01	1.34	11.97	99.24	not found
5	AGCAGGGCCACTGGCA	149	1492	IGKV3D-20_01	IGKJ2_01	0.79	12.77	97.71	CAGCAGTATGGTAGCTC
6	ACCAGGGCCACTGGTA	152	1133	IGKV3-15_01	IGKJ1_01	0.60	13.37	100.00	CAGCAGTATAATAACTC
7	AGAGTATTATAACTGC	226	992	IGKV1-5_03	IGKJ1_01	0.53	13.90	89.52	CAACAGTATCAGAGTT
8	AACAGGGCCACTGGCA	152	599	IGKV3-11_01	IGKJ4_01	0.32	14.22	100.00	CAGCAGCGTAGCAAC
9	AGAGCCGCGGTCTTT	235	424	IGKINTR	IGKDEL	0.23	14.45	100.00	not found
10	AGAGCCGCGGTCTTT	236	330	IGKINTR	IGKDEL	0.18	14.62	100.00	not found

**Figure 4:** This table, generated via the LymphoTrack Reporter, shows the top 10 reads from the read summary merged with the top 500 reads, a read will merge with another if they are only one or two bp different. Sequences were generated using the LymphoTrack *IGK* Assay – S5/PGM and analyzed using the LymphoTrack Software – S5/PGM (REF 75000007).

## 12. Troubleshooting Guide


**Table 9.** Troubleshooting

Occurs During	Error	Action
Sample and reagent preparation	Sample DNA quantity is less than 50 ng by a dsDNA-based method	Do not test the sample
Sample and reagent preparation	Sample DNA integrity is low	Test the sample using the Specimen Control Size Ladder available from Invivoscribe (REF 20960021 for ABI detection or REF 20960020 for gel detection)
Library creation by amplicon quantification and pooling	Amplicon concentration is less than 1 nM	Check the Bioanalyzer or LabchipGX ladder and repeat PCR if less than 1 nM.
Template preparation and S5 or PGM initialization	N/A	Call Thermo Fisher Scientific Tech Support +1-800-831-6844
Software installation	LymphoTrack Software does not install properly	Call Invivoscribe Tech Support +1-858-224-6600
Data analysis	LymphoTrack Software stops running	Call Invivoscribe Tech Support +1-858-224-6600
Data analysis	Excel Macro cannot be executed	Call Invivoscribe Tech Support +1-858-224-6600
Data analysis	No clonal sequence is detected for the Positive Control	Call Invivoscribe Tech Support +1-858-224-6600
No Template Control (NTC)	NTC shows amplicons after PCR	Repeat the assay

## 13. Technical and Customer Service

Thank you for purchasing our LymphoTrack *IGK* Assay – S5/PGM. We appreciate your business. We are happy to assist you with understanding this assay, and will provide ongoing technical assistance Monday through Friday to keep the assays performing efficiently in your laboratory.

### Contact Information

 Inivoscribe, Inc  
 10222 Barnes Canyon Road | Building 1 | San Diego | California 92121-2711 | USA  
 Phone: +1 858 224-6600 | Fax: +1 858 224-6601 | Business Hours: 7:00AM - 5:00 PM PST/PDT  
 Technical Service: [support@invivoscribe.com](mailto:support@invivoscribe.com) | Customer Service: [sales@invivoscribe.com](mailto:sales@invivoscribe.com) | Website: [www.invivoscribe.com](http://www.invivoscribe.com)

## 14. References

- van Dongen, JIM, *et al.* (2003). Design and standardization of PCR primers and protocols for detection of clonal immunoglobulin and T-cell receptor gene recombinations in suspect lymphoproliferations: Report of the BIOMED-2 Concerted Action BMH4-CT98-3936. *Leukemia* 17, 2257–2317.
- Tonegawa, S. (1983). Somatic Generation of Antibody Diversity. *Nature* 302, 575–581.
- Trainor, KJ. *et al.*, (1990). Monoclonality in B-lymphoproliferative disorders detected at the DNA level. *Blood* 75, 2220–2222.
- Miller, JE. (2013). Principle of Immunoglobulin and T Cell Receptor Gene Rearrangement. In Cheng, L., Zhang, D., Eble, JN. (Eds), *Molecular Genetic Pathology* (2<sup>nd</sup> Ed., sections 30.2.7.13 and 30.2.7.18). New York, USA: Springer Science & Business Media.
- Montserrat, E. (2005). Treatment of Chronic Lymphocytic Leukemia: Achieving Minimal Residual Disease–Negative Status As a Goal. *Journal of Clinical Oncology*, 23(13), pp. 2884–2885.
- Miklos, DB, *et al.*, (2013). Minimal residual disease quantification using consensus primers and high-throughput IGH sequencing predicts post-transplant relapse in chronic lymphocytic leukemia. *Leukemia* 27(8): 1659–1665.
- Campana, D. *et al.*, (2012). Deep-sequencing approach for minimal residual disease detection in acute lymphoblastic leukemia. *Blood* 120:5173-5180.
  - LymphoTrack Software – S5/PGM Instructions for Use (**REF** 280359)
  - User Guide: Ion 510 & Ion 520 & Ion 530 Kit – Chef (Man0016854, Rev. C.0)
  - User Guide: Ion 520 & Ion 530 Kit – OT2 (Man0010844, Rev. D.0)
  - User Guide: Ion PGM Hi-Q View OT2 Kit (Man0014579 Rev A.0)
  - User Guide: Ion PGM Hi-Q View Sequencing Kit (Man0014583, Rev A.0)
  - Agilent DNA 1000 Kit Guide
  - LabChip GX/GX II User Manual
  - HT DNA High Sensitivity LabChip Kit LabChip GX/GXII User Guide
  - <http://www.thermofisher.com>
  - <http://ioncommunity.thermofisher.com>
  - <http://www.agilent.com>
  - <http://www.perkinelmer.com>

## 15. Symbols

The following symbols are used in Inivoscribe NGS product labeling.

	Catalog Number		Expiration Date
	Reagent Volume		Manufacturer
	Lot Number		Consult Instructions for Use
	Storage Conditions		Research Use Only

## 16. Legal Notice

For Legal Notices related to this product, visit: <https://invivoscribe.com/legal-notices/>

## 17. LymphoTrack *IGK* Assay – Ion S5: Single Page Guide

- 17.1 Using gloved hands, remove the Master Mixes from the freezer. Use a different indexed Master Mix for each sample and controls. Allow the Master Mix tubes to thaw; then gently vortex to mix.
- 17.2 In a containment hood or dead air box pipette 45  $\mu\text{L}$  of Master Mix into individual wells of a PCR plate for the samples, positive, negative, and no template controls (one well for each indexed Master Mix).
- 17.3 Add 0.2  $\mu\text{L}$  Taq DNA polymerase or equivalent (@5 U/ $\mu\text{L}$ ) to each Master Mix.
- 17.4 Add 5  $\mu\text{L}$  sample DNA (at a minimum concentration of 10 ng/ $\mu\text{L}$ ) and 5  $\mu\text{L}$  of control samples to wells containing the respective Master Mix reactions, and pipette up and down 5-10 times to mix.
- 17.5 Add 5  $\mu\text{L}$  molecular biology grade water to the well containing the respective Master Mix for no template control, and pipette up and down 5-10 times to mix.
- 17.6 Seal the plate and amplify target DNA using the standard thermal cycler program:

Step	Temperature	Time	Cycle
1	95°C	7 minutes	1
2	95°C	45 seconds	29x
3	60°C	45 seconds	
4	72°C	90 seconds	
5	72°C	10 minutes	1
6	15°C	$\infty$	1

- 17.7 Remove the amplification plate from the thermal cycler.
- 17.8 Purify the PCR products using the Agencourt AMPure XP PCR Purification system. Add 90  $\mu\text{L}$  of particles to each 50  $\mu\text{L}$  reaction then elute purified DNA in 40  $\mu\text{L}$  TE buffer.
- 17.9 Quantify amplicons with an appropriate method (*e.g.*, Agilent 2100 Bioanalyzer or LabChip GX).
- 17.10 Based on the quantification, combine an equal amount of each amplicon in a tube (do not include the no template control); use TE buffer to make up a total volume of 10  $\mu\text{L}$  per Master Mix. Gently vortex to mix followed by a brief centrifugation.
- 17.11 Dilute the library to 20 pM with Nuclease-free water.
- 17.12 Perform emulsion PCR to prepare the template by using either the Ion Chef or the Ion OT2 paired with the Ion ES instruments.
- Using the Ion Chef instrument with the Ion 510 & Ion 520 & Ion 530 Kit – Chef or
  - Using the Ion OneTouch instrument with Ion 520 & Ion 530 Kit – OT2
- 17.13 Initialize the Ion S5 and load the Ion 520 or Ion 530 chip with the ISPs.
- 17.14 Create a Planned Run using the Torrent Browser.
- 17.15 Start the Ion S5 run.
- 17.16 Analyze and visualize the acquired data using the associated LymphoTrack Software – S5/PGM package.

## 18. LymphoTrack *IGK* Assay – PGM: Single Page Guide

- 18.1. Using gloved hands, remove the Master Mixes from the freezer. Use a different indexed Master Mix for each sample and controls. Allow the Master Mix tubes to thaw; then gently vortex to mix.
- 18.2. In a containment hood or dead air box pipette 45  $\mu\text{L}$  of Master Mix into individual wells of a PCR plate for the samples, positive, negative, and no template controls (one well for each indexed Master Mix).
- 18.3. Add 0.2  $\mu\text{L}$  Taq DNA polymerase (@5 U/ $\mu\text{L}$ ) to each Master Mix.
- 18.4. Add 5  $\mu\text{L}$  sample DNA (at a minimum concentration of 10 ng/ $\mu\text{L}$ ) and 5  $\mu\text{L}$  of control samples to wells containing the respective Master Mix reactions, and pipette up and down 5-10 times to mix.
- 18.5. Add 5  $\mu\text{L}$  molecular biology grade water to the well containing the respective Master Mix for no template control, and pipette up and down 5-10 times to mix.
- 18.6. Seal the plate and amplify target DNA using the standard thermal cycler program:

Step	Temperature	Time	Cycle
1	95°C	7 minutes	1
2	95°C	45 seconds	29x
3	60°C	45 seconds	
4	72°C	90 seconds	
5	72°C	10 minutes	1
6	15°C	$\infty$	1

- 18.7. Remove the amplification plate from the thermal cycler.
- 18.8. Purify the PCR products using the Agencourt AMPure XP PCR Purification system. Add 90  $\mu\text{L}$  of particles to each 50  $\mu\text{L}$  reaction then elute purified DNA in 40  $\mu\text{L}$  TE buffer.
- 18.9. Quantify amplicons with an appropriate method (*e.g.*, Agilent 2100 Bioanalyzer or LabChip GX).
- 18.10. Based on the quantification, combine an equal amount of each amplicon in a tube (do not include the no template control); use TE buffer to make up a total volume of 10  $\mu\text{L}$  per Master Mix. Gently vortex to mix followed by a brief centrifugation.
- 18.11. Dilute the library to 20 pM with 1X TE buffer or the Nuclease-free water provided with the Hi-Q View OT2 Kit.
- 18.12. Using the Ion OneTouch 2 instrument with the Ion PGM Hi-Q View OT2 Kit, perform an emulsion PCR to create template-positive ion sphere particles (ISPs).
- 18.13. Enrich the template-positive ISPs with the Ion OneTouch ES.
- 18.14. Initialize the Ion PGM and load the Ion 316 Chip v2 BC (or Ion 318 Chip v2 BC) with the ISPs.
- 18.15. Create a Planned Run using the Torrent Browser.
- 18.16. Start the Ion PGM run.
- 18.17. Analyze and visualize the acquired data using the associated LymphoTrack Software – S5/PGM package.


## 19. Appendix A: Configure the Plugin *FileExporter* and Load Custom Barcodes

If using Torrent Suite Software v5.2.2 or v5.6, verify the configuration of the *FileExporter* plugin and load the custom barcodes using the *LymphoTrack\_IonXpress.csv* file included with the software package (REF 75000007), available for download from the Invivoscribe Software Portal.


### 19.1. Verify the configuration of plugin *FileExporter*

19.1.1. Log in to Torrent Suite Software as admin.

19.1.2. Confirm the correct plugin configuration for *FileExporter*.


- From the gear icon (  ) on the *Torrent Suite Server Home Screen* and select **Plugins** from the dropdown menu.
- Find the *FileExporter* plugin and click on the gear icon, then select **Configure** (the configuration window will open).
- Under **File > Options**: check the FASTQ boxes.
- For *Archive Type*, select **Zip**.
- Select the preferred *Naming Option*.
- Save the configuration.

19.1.3. Verify the **Change Plugin Configuration** for the *FileExporter* plugin.

- Click on the gear icon (  ) and select **Configure**.
- Scroll down and click **Admin Interface**.
- Scroll down and select **Plugins** on the left hand side, then select **FileExporter**.
- Verify the sections for *Status* and *Userinputfields* display { }, if not, delete the contents until { } is displayed. Do not change any other parameters (not mentioned here).
- Select **Save**.

### 19.2. Load Custom barcodes

19.2.1. Log on to Torrent Suite Software as admin.

- Select the gear icon (  ) the select **References** from the dropdown menu.
- Select **Barcodes** then select **Add new DNA Barcodes**.
- Select **Choose File** and upload the *LymphoTrack\_IonXpress.csv* file
- Name the *Barcode set name* (e.g. *LymphoTrack\_IonXpress*) and click **Upload**.
- This name of barcodes will be used for all LymphoTrack assays in the run set up.
- Verify the newly added barcodes are shown in the **Barcode** menu.

19.2.2. Proceed to step 7.12 *Create a Planned Run*